

ELLE DECORATION

JUL/AUG 2023

BRINGING HOLIDAYS HOME

ELLE DECORATION N°368 JUL/AUG 2023

BRINGING HOLIDAYS HOME

ELLEDECORATION.CO.UK



● Sultry summer decorating ● Red-hot new furniture ● Five-star hotel style decoded ● Creatives bringing joy to the streets

ELLE DECORATION focus

DESIGN HOTELS

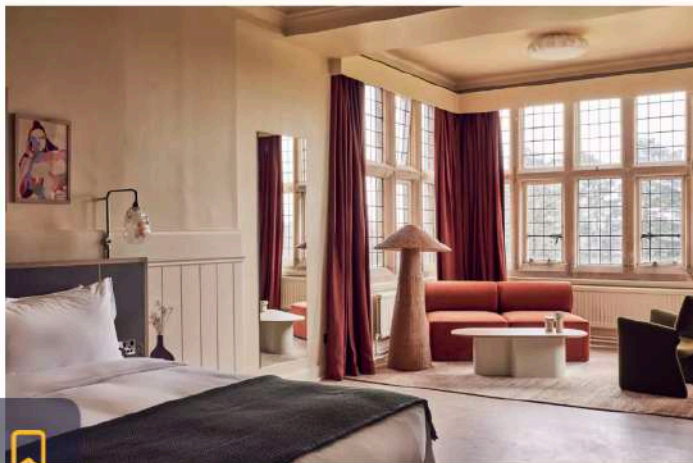
Urban retreats, boutique stays and even a modern manor house – we reveal the most exciting openings of the summer, the dreamiest pools and how you can bring the luxury home

PICTURE: ADAM DYNK

Birch Selsdon, a beautifully reimagined manor house set in 200 acres of British countryside, offers a UK getaway that's a cut above. Turn the page to explore beyond the reception (pictured) and discover its style – as well as more of the best design hotels of 2023 ➤



design hotels



Birch Selsdon

If it's English country-house style with a modern twist you're after, look no further than the recently opened 181-roomed Birch Selsdon, sister hotel to the award-winning

Birch Cheshunt. Located just 30 minutes outside London, the historic 19th-century gothic manor has been renovated by London-based interior and furniture practice A-nrd, with designer and eco champion Sebastian Cox leading the rewilding of its grounds. Birch describes itself as 'a welcome respite from the noise and intensity of London's concrete jungle', with bedrooms that boast views of the surrounding 200-acre Selsdon Park. Inside is all sustainable and recycled materials, natural colours and forms. An in-house pottery studio and wellness space provide areas for quiet reflection, while a farm and lido bring you closer to nature. From £180 per night (birchcommunity.com).

Five-star decorating

A-nrd founder Alessio Nardi shares some of Birch Selsdon's design tips



Re-purpose waste into bespoke furniture. London-based designer Chelsea Vivash's wardrobe marquetry in Birch Selsdon was made using wood offcuts.

Choose pieces that support sustainable craft, such as these abstract handmade papier-mâché wall lights by Maria Fiter of Crea-Re Studio



An upholstered sofa, like the one in Birch Selsdon's lobby, is a great way to introduce a bold colour – in this case 'Pilot' in '772' by Raf Simons for Kvadrat ▶

WORDS: ALEX THINNY; PICTURES: ADRIAN FINE

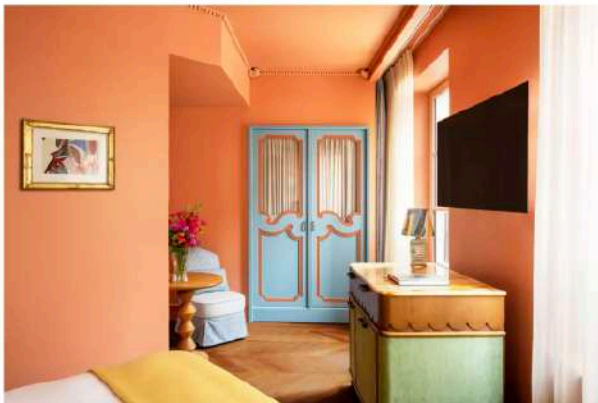




Le Grand Mazarin

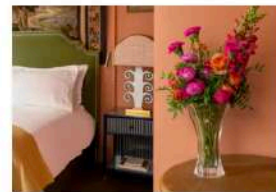
French boutique hotelier Maisons Pariente is no stranger to design flourishes, but this new Paris opening is perhaps its most opulent site yet. One of several hotels set to open in the French capital in the coming months, Le Grand Mazarin is a lesson in aristocratic grandeur, with an eclectic array of fixtures and furnishings, and a tonal palette that exudes true glamour. Interior designer Martin Brudnizki – also behind London hotel Broadwick Soho and New York’s The Beekman – is responsible for the decor in the 11 suites and 50 rooms. His signature whimsical touches and artistic flair are evident at every turn, but we can’t wait to see the basement cabaret bar that’s sure to become legendary. Opens 4 September. From approx £600 per night (legrandmazarin.com).

PICTURES: MARK GREEN, VINCENT BODJAK

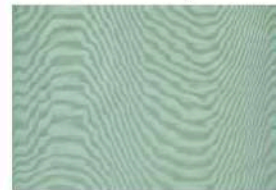


Five-star decorating

Martin Brudnizki shares some special touches from Le Grand Mazarin



To create warmth and intrigue in the bedroom, we applied natural paint colours, such as Edward Bulmer’s reddish brown ‘Brick’, across the ceiling and walls.



Dedar’s jade-coloured ‘Amor Fou’ wallcovering, a star of the hotel’s reception area, gives static walls the illusion of movement while adding a sense of whimsy ➤



